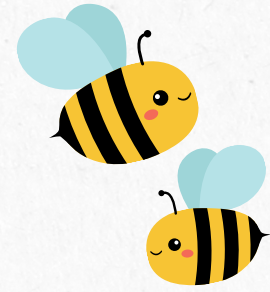
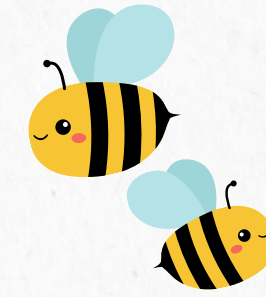


# Watonga Public Library, 301 N Prouty 580-623-7748



# April 2024



Sun	Mon	Tue	Wed	Thu	Fri	Sat
	1 <b>DUNGEONS AND DRAGONS CLUB</b> 4PM	2	3 <b>PRESCHOOL STORYTIME</b> AGE 5 AND UNDER @10AM	4	5 <b>ANIME CLUB</b> @4PM <b>LIBRARY LITERACY OUTREACH</b>	6
7 	8 	9 <b>LEGO DAY</b> 4-5	10 <b>PRESCHOOL STORYTIME</b> AGE 5 AND UNDER @10AM	11 <b>ADULT CRAFT</b> @ 1PM & 5:30PM 	12 <b>ANIME CLUB</b> @4PM <b>LIBRARY LITERACY OUTREACH</b> 	13
14	15 <b>DUNGEONS AND DRAGONS CLUB</b> 4PM	16 <b>CRAFT DAY</b> 4-5 	17 <b>PRESCHOOL STORYTIME</b> AGE 5 AND UNDER @10AM <b>BOOK CLUB</b> @ 1PM	18	19 <b>ANIME CLUB</b> @4PM <b>LIBRARY LITERACY OUTREACH</b>	20
21	22	23 <b>STEM DAY</b> 4-5	24 <b>PRESCHOOL STORYTIME</b> AGE 5 AND UNDER @10AM 	25 <b>ADULT CRAFT</b> @ 1PM & 5:30PM 	26 <b>ANIME CLUB</b> @4PM <b>LIBRARY LITERACY OUTREACH</b>	27
28	29	30 <b>MOVIE DAY</b> 4-5:30				



## **K - 5th Grade**

**Lego Day-** Let your imagination come to life through intuitive play! Join us for Lego day and build your fun brick by brick!

**Craft Day-** Come get creative in our children's craft class!

**STEM DAY-** Science, Technology, Engineering, Math! Join us for our monthly STEM day!

**Movie Day-** Need a break and want to kick back and relax? then come join us for a movie!

## **0-5**

**Storytime -** Join us for our weekly story time, games, and activities with our Super Children's Librarian Alaya Keierleber! Ages 5 and under are welcome every Wednesday at 10 AM.

## **Teen**

**Dungeons and Dragons-** Join us and get creative with this engaging and collaborative story telling experience!

**Anime Club-** From pirates to super humans anime has it all. We will be exploring the exciting world of anime and manga. If you love art, foreign culture and all things awesome this club is for you!

## **Adult**

**Adult Craft-** Join us and learn to make something awesome!

**Book Club-** We will be hosting our monthly book club. Refreshments are provided.

**Adult Craft -** Come make another cool craft with us!